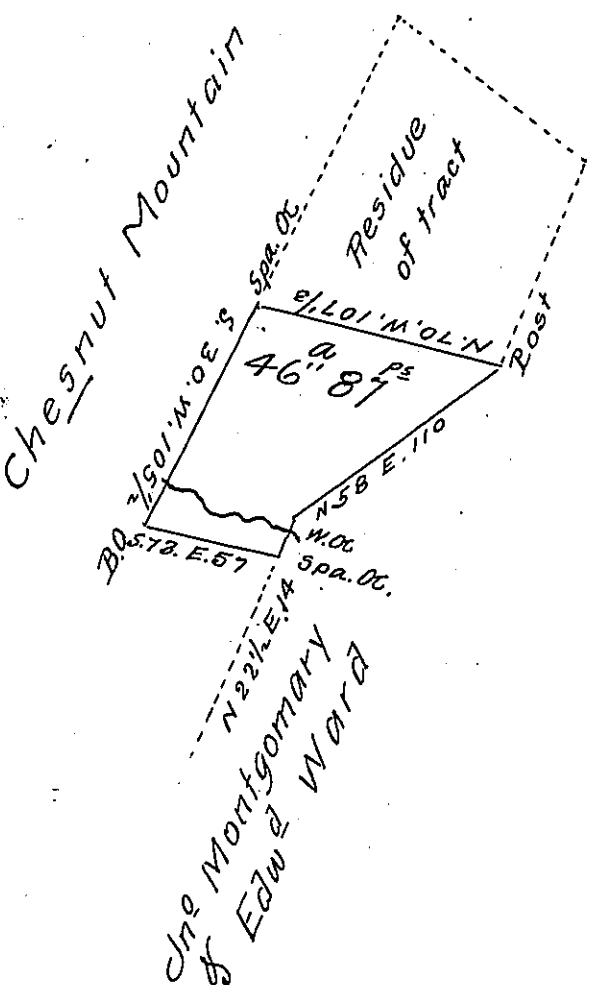


FORM No. 1.



A Draught of Forty six acres and 87 perches and the allowance of six per Cent for roads &c. Part of a larger tract of Land situate in Union Township (formerly Cumberland) now Mifflin County.

Appears survey'd the 20<sup>th</sup> day of August 1784 in pursuance of an application in the name of John Hughs dated the 25<sup>th</sup> day of November 1766 N<sup>o</sup> 1956.

Note. The Survey of Jn<sup>o</sup> Hughs was said to contain 17 1/4 acres &c.

Divided the 20<sup>th</sup> day of May 1802

W<sup>m</sup> William Harris D.S.

To Samuel Cochran Esquire

Surv<sup>r</sup> Gen<sup>l</sup> of Pennsylvania.

IN TESTIMONY that the above is a copy of the original remaining on file in the Department of Internal Affairs of Pennsylvania, made conformably to an Act of Assembly approved the 16th day of February 1833, I have hereunto set my hand and caused the Seal of said Department to be affixed at Harrisburg, this sixteenth day of August 1907

Henry Howell  
Secretary of Internal Affairs.